






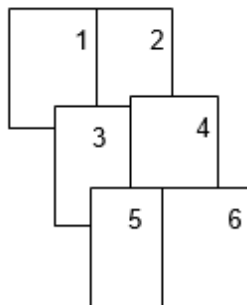
## OBSZAR I GRANICE AGLOMERACJI MŁAWA

Mapa w skali 1 : 10 000

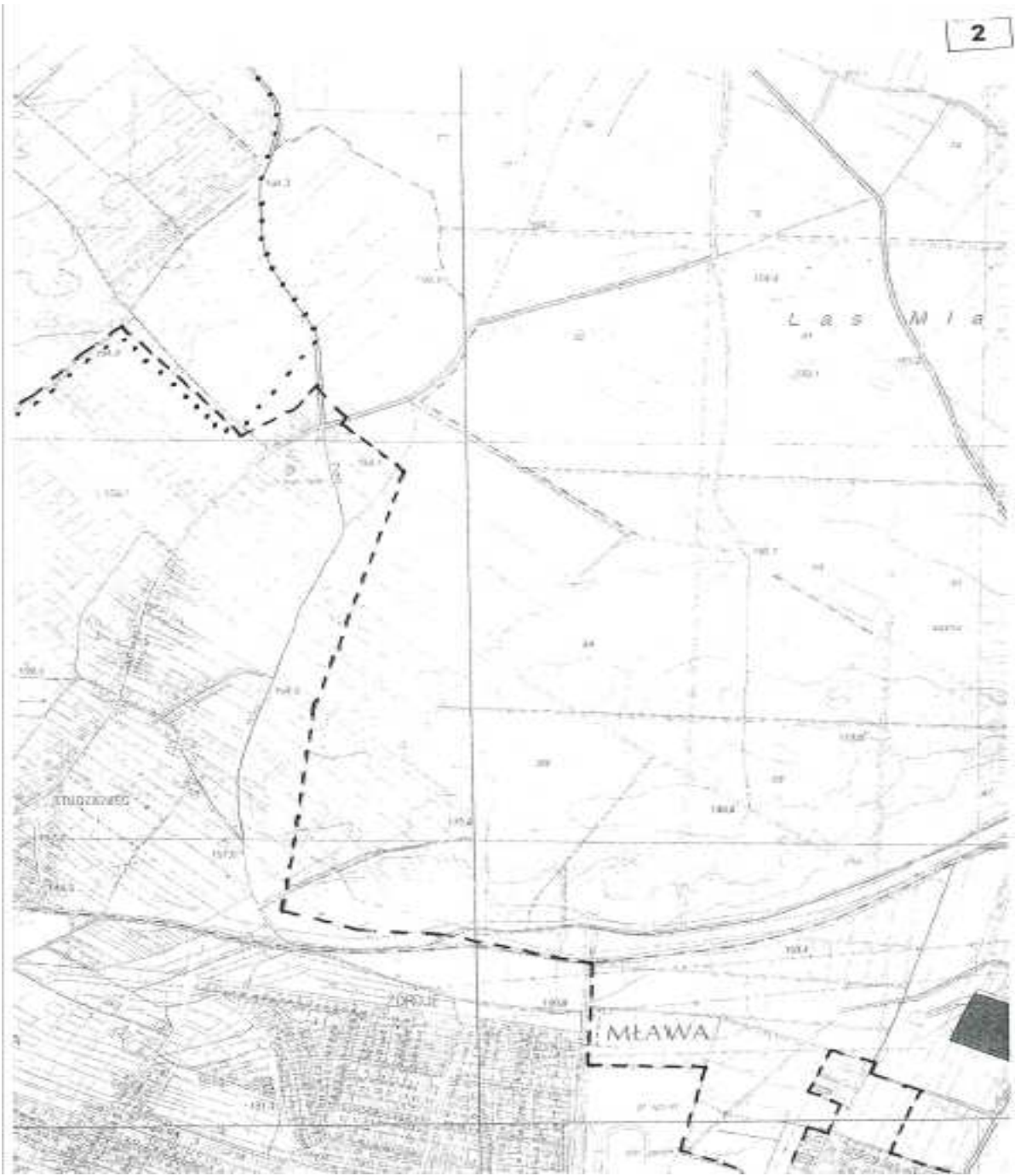
### OBJAŚNIENIA ZNAKÓW

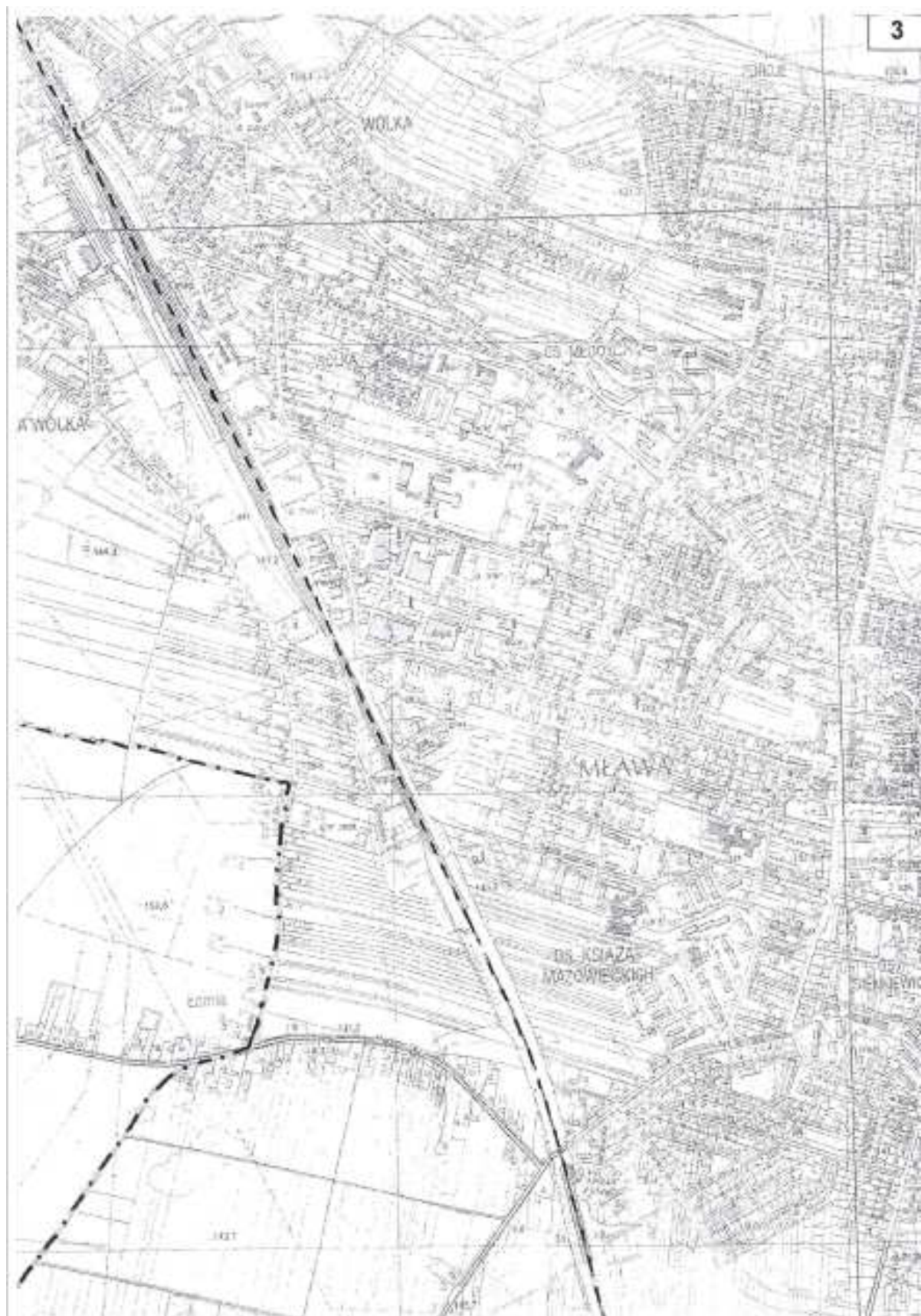
	Oczyszczalnia ścieków komunalnych
	Granica aglomeracji Mława przebiegająca wzdłuż zewnętrznych granic skanalizowanych działek budowlanych
	Granica administracyjna gminy
	Granica użytku ekologicznego Ostoja rzeki Seracz
	Granica Zieluńsko - Rzegnowskiego Obszaru Chronionego Krajobrazu

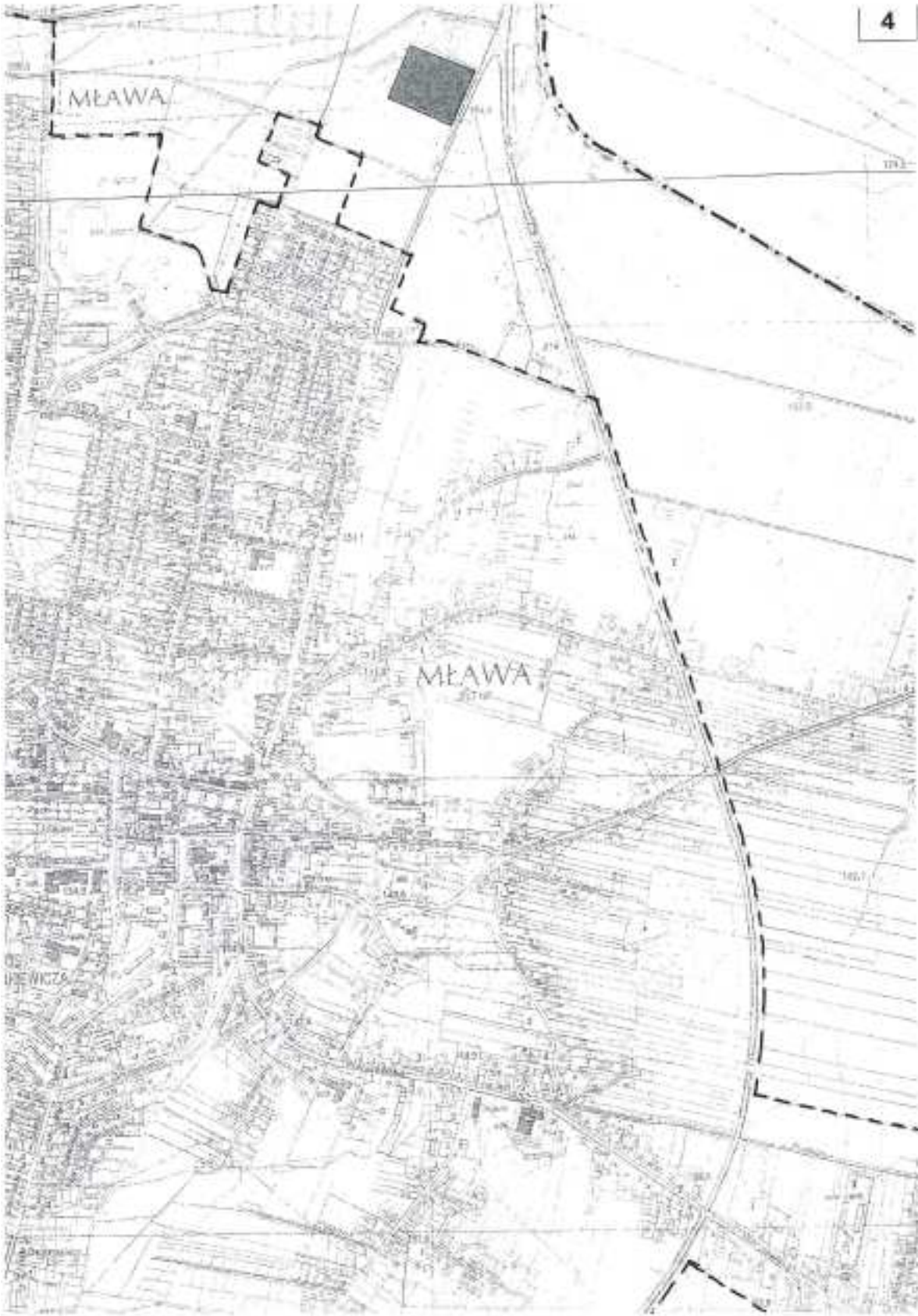
Szkic położenia arkuszy:

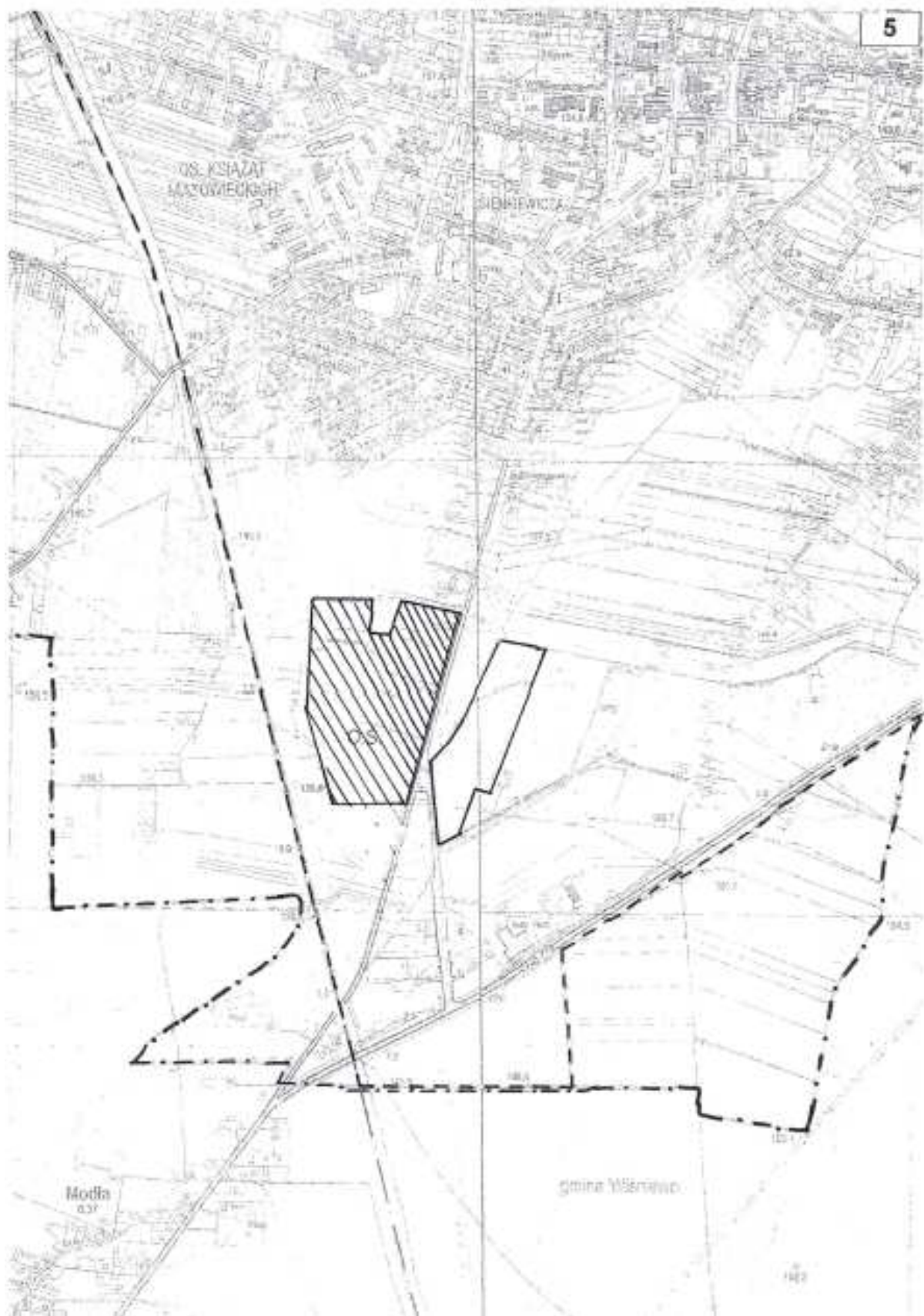


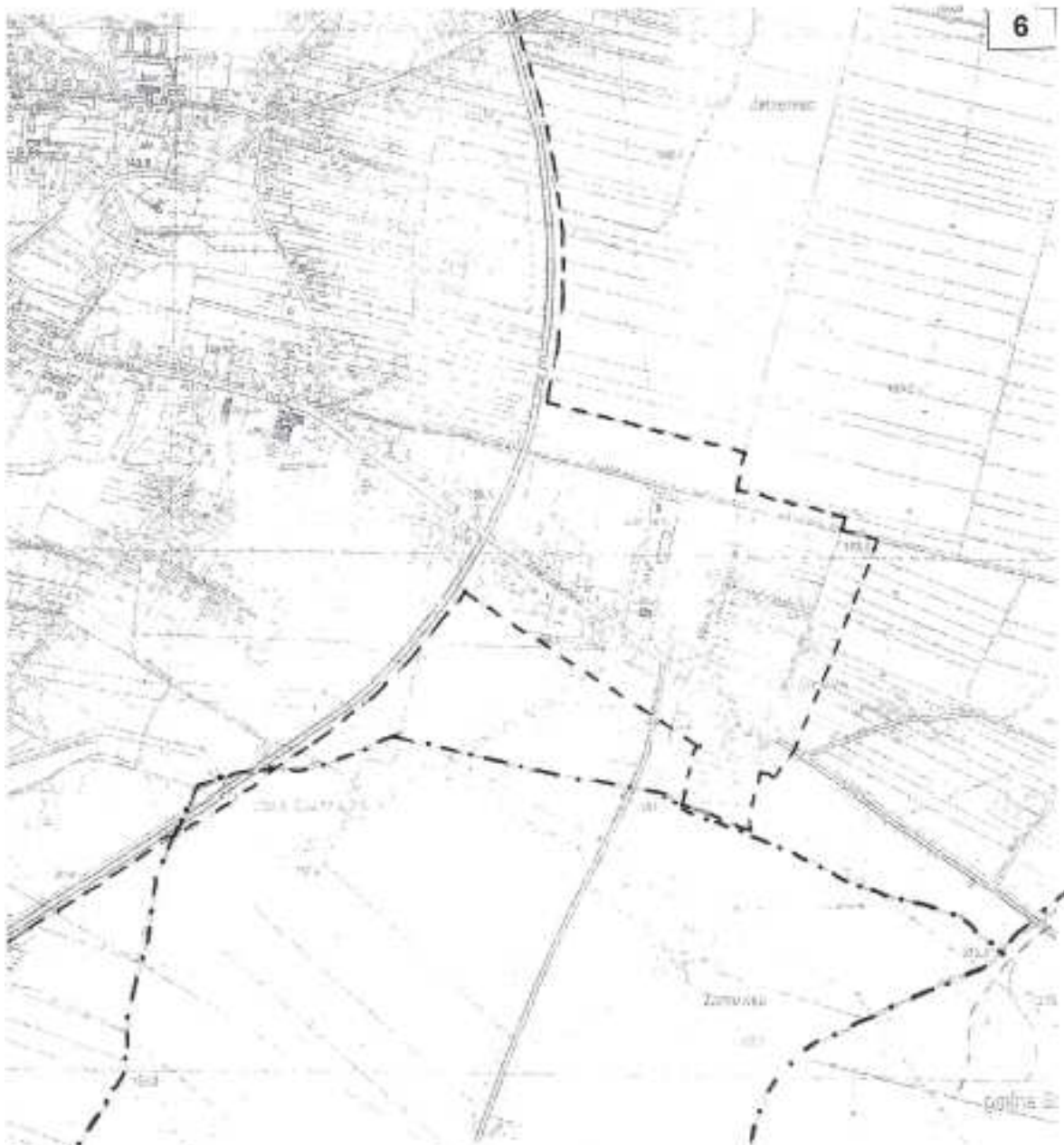












skala 1:10 000

